

ecomax

by **HOBART**



the
clean
range



The Clean Range

A range of undercounter glasswashers, front loading dishwashers, pass through hood machines and rack conveyor dishwashers offering the independent caterer unbeatable quality and reliability at value for money prices. All machines have been built with hygiene, efficiency and ease of use in mind. Most models offer internal detergent and rinse aid dosing equipment, rinse pumps, air gaps and thermostop rinse control which ensures that the machines will only rinse at the correct temperatures. All machines are WRAS approved. A range of standard stainless steel tabling and accessories complement the machines to ensure an efficient system can be installed to suit your own individual requirements.

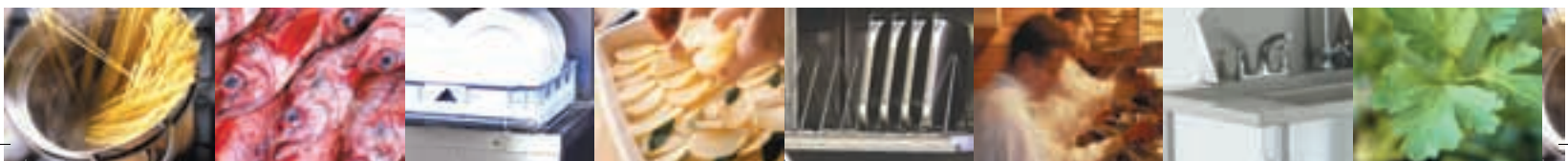
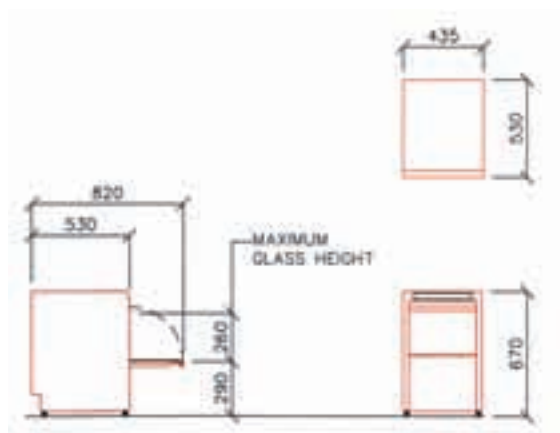


GLASSWASHERS

CLG25 Undercounter Glasswasher

A compact high performance glasswasher designed to deliver sparkling clean glasses every time. The push button controls ensure simple operation and reliability.

- A fixed 150 second wash cycle with fresh water rinse
- Up to 24 racks (400 pint glasses) per hour
- Optional drain pump
- Supplied with 65mm and 120mm glass racks, two cutlery holders and a plate insert
- Class A air gap
- Integral detergent and rinse aid dosing equipment
- Also available without class A air gap (**CLG25NA**)



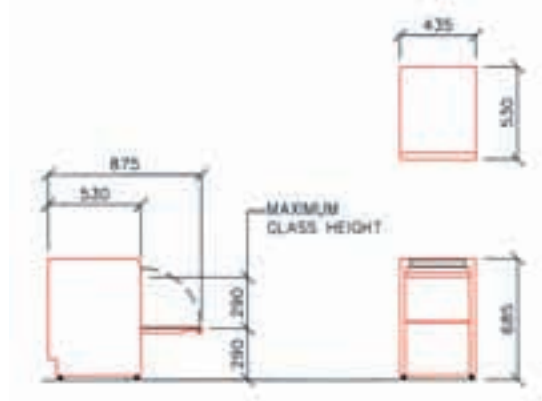


CHG25 Undercounter Glasswasher

A high performance professional glasswasher with a comprehensive specification designed to deliver sparkling clean glasses every time. The electronic soft touch control panel offers additional features and a digital read out of operating temperatures.



- A fixed 150 second wash cycle with fresh water rinse
- Up to 24 racks (400 pint glasses) per hour
- Glasses up to 290mm tall easily accommodated
- Drain pump included
- Energy saving standby feature
- Thermostop hygiene feature
- Supplied with 65mm and 120mm glass racks, two cutlery holders and a plate insert
- Class A air gap
- Integral detergent and rinse aid dosing equipment
- Also available without class A air gap (**CHG25NA**)



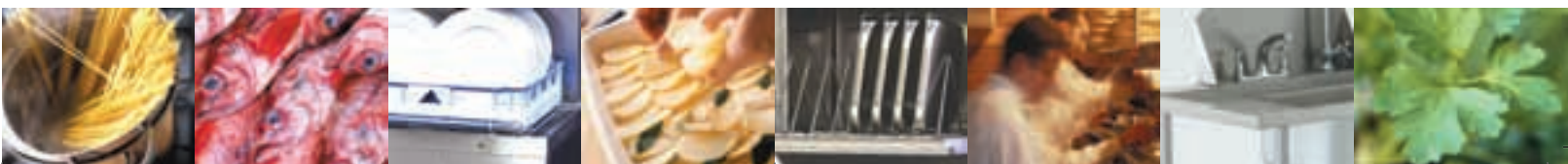
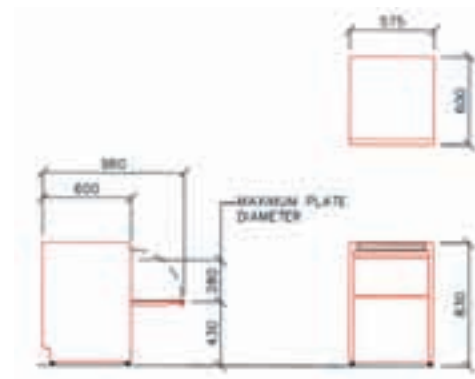
UNDERCOUNTER DISHWASHERS

CLF26 Undercounter Dishwasher

An efficient, high performance commercial dishwasher designed to deliver consistently clean results every time. The push button controls ensure simple operation and reliability.



- Two wash cycles, 60 seconds and 180 seconds
- Up to 26 racks (100 covers) per hour
- Optional drain pump
- Supplied with a plate rack, cup rack and cutlery basket
- Class A air gap
- Integral detergent and rinse aid dosing equipment
- Switchable electrical loading



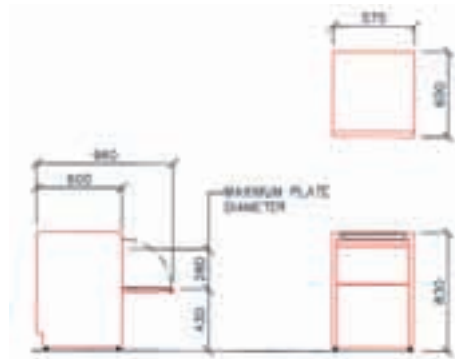


CLF26D Undercounter Dishwasher

The CLF26D Undercounter Dishwasher is now available with a factory fitted drain pump, saving you time and money by not having to install the pump yourself.



- Two wash cycles, 60 seconds and 180 seconds
- Up to 26 racks (100 covers) per hour
- Drain pump included
- Supplied with a plate rack, cup rack and cutlery basket
- Class A air gap
- Integral detergent and rinse aid dosing equipment
- Switchable electrical loading

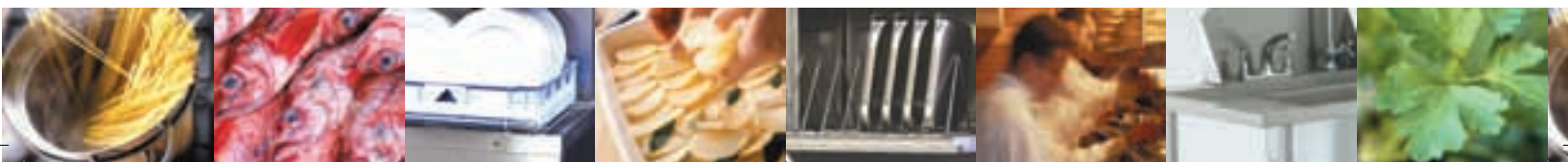


CHF40 Undercounter Dishwasher

A fully professional dishwasher with a comprehensive specification designed to deliver sparkling clean results every time. The electronic soft touch control panel offers additional features and a digital read out of operating temperatures.



- Choice of four wash cycles, 60, 120, or 180 seconds and a continuous option
- Up to 40 racks (160 covers) per hour
- Items up to 280mm tall easily accommodated
- Drain pump included
- Energy saving standby feature
- Thermostop hygiene feature
- Supplied with a plate rack, cup rack and cutlery basket
- Class A air gap
- Integral detergent and rinse aid dosing equipment
- Switchable electrical loading





CHF45 Undercounter Dishwasher

The CHF45 Undercounter Dishwasher is a step up from our biggest selling undercounter dishwasher, the CHF40. This model is double skinned for more economical use and quieter operation. It has built-in detergent and rinse aid dosing and drain pump. This new model gives you the opportunity to offer your clients a machine with additional features and benefits.



- Choice of four wash cycles, 60, 120, or 180 seconds and a continuous option
- Up to 40 racks (160 covers) per hour
- Items up to 340mm tall easily accommodated
- Drain pump included
- Energy saving standby feature
- Thermostop hygiene feature
- Supplied with a plate rack, cup rack and cutlery basket
- Class A air gap
- Integral detergent and rinse aid dosing equipment
- Switchable electrical loading

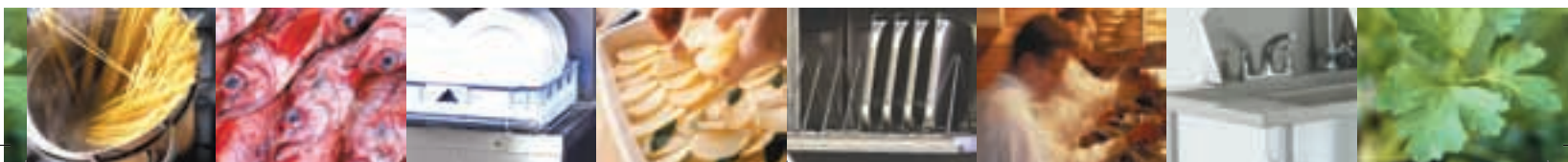
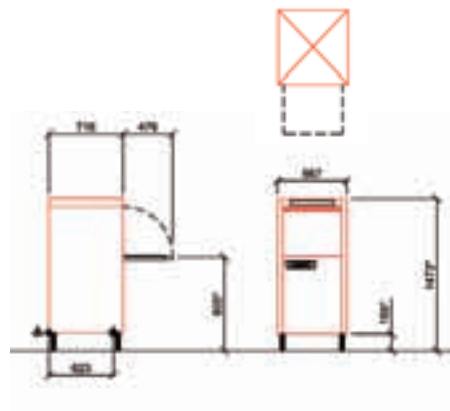


CHF60 Front Loading Dish and utensil Washer

The CHF60 Front Loading Dishwasher is capable of up to 60 racks per hour, so where space is limited you need a high volume machine complete with detergent and rinse aid dosing and drain pump, this is the machine for you.



- Choice of four wash cycles, 60, 120, or 180 seconds and a continuous option
- Up to 60 racks (240 covers) per hour
- Drain pump included
- Energy saving standby feature
- Thermostop hygiene feature
- Large chamber to accommodate GN pans, trays and utensils
- Supplied with a plate rack, cup rack and cutlery basket
- Class A air gap
- Integral detergent and rinse aid dosing equipment





HOOD TYPE DISHWASHERS

CHH30 Hood Type Dishwasher

Hood Type Dishwasher capable of washing up to 30 racks per hr.

- Choice of 2 wash cycles (60/120 seconds)
- Up to 120 covers per hr.
- Items up to 420mm easily accommodated
- Counterbalanced hood
- Easy strip down for quick and effective cleaning
- Simple to use controls
- Integral detergent and rinse aid dosing equipment
- Integral Class A air gap
- Supplied with a plate rack, cup rack and cutlery basket
- Switchable electrical loading

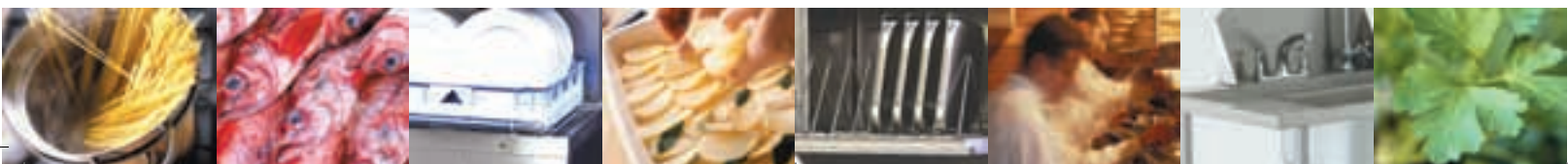
This is an ideal entry model for the independent operator who needs a pass through system. Suitable for either straight through or corner operation.



CHH50 Hood Type Dishwasher and CHH50D Hood Type Dishwasher - with built-in drain pump

An efficient, economical and powerful pass through machine suitable for any busy independent kitchen. Adaptable for either straight through or corner operations ensuring it will meet all your operational requirements. The hood mounted electronic soft touch control panel offers additional features and a digital read out of operating temperatures.

- Choice of four wash cycles, 60, 120, or 180 seconds and a continuous option
- Up to 50 racks (200 covers) per hour
- Items up to 420mm tall easily accommodated
- Counterbalanced hood
- Easy strip down for quick and effective cleaning
- Optional drain pump
- Energy saving standby feature
- Thermostop hygiene feature
- Supplied with a plate rack, cup rack and cutlery basket
- Class A air gap
- Integral detergent and rinse aid dosing equipment
- Switchable electrical loading





CHH60D Hood Type Dishwasher

The CHH60D Hood Type Dishwasher is capable of up to 60 racks per hour.

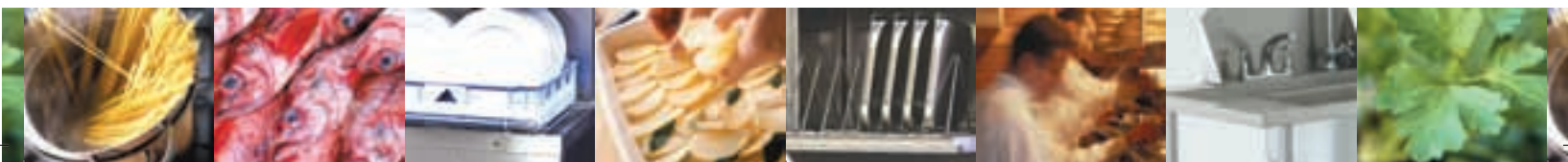
- Choice of four wash cycles, 60, 120, or 180 seconds and a continuous option
- Up to 60 racks per hour
- Items up to 420mm tall easily accommodated
- Counterbalanced hood
- Easy strip down for quick and effective cleaning
- Drain pump included
- Energy saving standby feature
- Thermostop hygiene feature
- Supplied with a plate rack, cup rack and cutlery basket
- Class A air gap
- Integral detergent and rinse aid dosing equipment
- Switchable electrical loading



CHH70D Hood Type Dishwasher

The CHH70D Hood Type Dishwasher is capable of up to 70 racks per hour.

- Choice of four wash cycles, 60, 120, or 180 seconds and a continuous option
- Up to 70 racks per hour
- Items up to 420mm tall easily accommodated
- Counterbalanced hood
- Easy strip down for quick and effective cleaning
- Drain pump included
- Energy saving stand by feature
- Thermostop hygiene feature
- Supplied with a plate rack, cup rack and cutlery basket
- Class A air gap
- Integral detergent and rinse aid dosing equipment



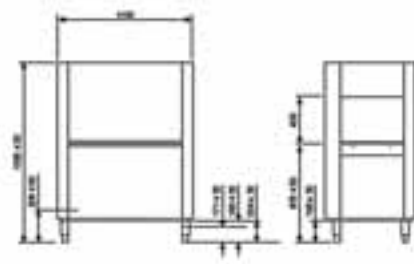


RACK CONVEYOR DISHWASHERS

CCR100 Rack Conveyor Dishwasher

Rack Conveyor Dishwasher capable of washing up to 100 racks per hr. (1800 dishes)

- Compact design (just 1150mm long!)
- Reversible direction of operation
- Low running costs
- Simple to use controls
- Easy to clean interior
- Large panoramic door
- Integral Class A air gap
- Supplied with a plate rack, cup rack and cutlery basket
- Integral detergent and rinse aid dosing equipment



This model is ideally suited to higher volume operations where a hood machine would not be sufficient.

Also available **CCR130** - 130 racks per hr.
CCR170 - 170 racks per hr.

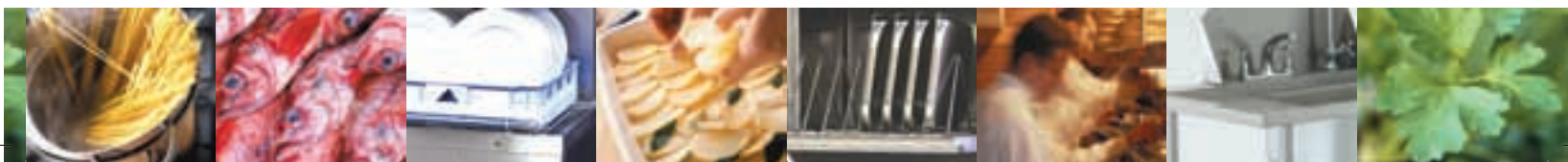
TABLING AND ACCESSORIES



A standard range of stainless steel fabrications to improve the handling of items to be cleaned and to ensure an efficient system is employed.

- Stands for undercounter glass and dishwashers
- Sink units to accommodate undercounter dishwashers

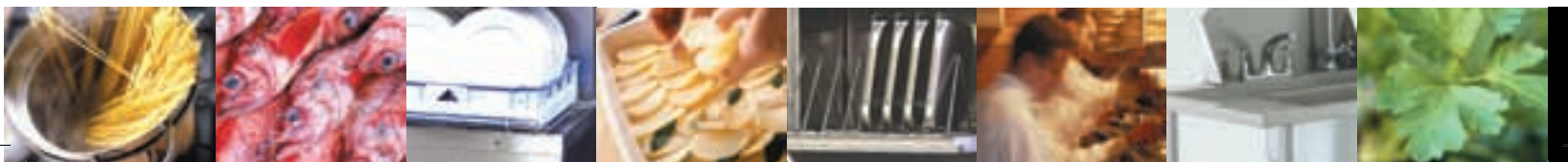
- Single and double rack inlet or outlet tables for the hood machine
- Inlet double rack table with sink unit for hood machine
- Optional overhead spray hose for sink units





TECHNICAL SPECIFICATIONS

GLASSWASHERS	Model	Dimensions WxDxH	Electric kW	Fused
Glasswasher, push button controls, 385x385mm rack. - Racks per hour: up to 24. - Cycle time: 150 seconds. - Usable chamber height: 260mm. - Hot soft water connection required at 1-4 bar water pressure.	CLG25 CLG25NA CHG25A	435x530x670mm	2.75, 230/50/1	13 Amp
Glasswasher, electronic controls, 385x385mm rack. - Racks per hour: up to 24. - Cycle time: 150 seconds. - Usable chamber height: 290mm. - Hot soft water connection required at 1-4 bar water pressure.	CHG25	435x530x685mm	2.75, 230/50/1	13 Amp
UNDERCOUNTER DISHWASHER	Model	Dimensions WxDxH	Electric kW	Fused
Dishwasher, push button controls, 500x500mm rack. - Racks per hour: up to 26. - Cycle time: 60/120 seconds. - Usable chamber height: 280mm. - Hot or cold soft water connection required at 1-4 bar water pressure.	CLF26	575x600x830mm	6.2, 6.5, 230/50/1 or 6.7, 230/50/1	13 Amp 30 Amp
Dishwasher, push button controls, 500x500mm rack. - Racks per hour: up to 26. - Cycle time: 60/120 seconds. - Usable chamber height: 280mm. - Hot or cold soft water connection required at 1-4 bar water pressure.	CLF26D	575x600x830mm	6.2, 6.5, 230/50/1 or 6.7, 230/50/1	13 Amp 30 Amp
Dishwasher, electronic controls, 500x500mm rack. - Racks per hour: up to 40. - Cycle time: 60/120/180 seconds, plus continuous option. - Usable chamber height: 320mm. - Hot or cold soft water connection required at 1-4 bar water pressure.	CHF40	575x600x830mm	2.65, 230/50/1 or 6.7, 230/50/1	13 Amp 30 Amp
Dishwasher, electronic controls, 500x500mm rack. - Racks per hour: up to 40. - Cycle time: 60/120/180 seconds, plus continuous option. - Usable chamber height: 320mm. - Hot or cold soft water connection required at 1-4 bar water pressure.	CHF45	600x635x820mm	2.7, 230/50/1 or 5.5, 230/50/1	13 Amp 30 Amp
FRONT LOADING DISHWASHER	Model	Dimensions WxDxH	Electric kW	Fused
Dishwasher, electronic controls, 500x500mm rack. - Racks per hour: up to 60. - Cycle time: 60/120/180 seconds, plus continuous option. - Usable chamber height: 476mm. - Hot or cold soft water connection required at 1-4 bar water pressure.	CHF60	667x716x11473mm	9.1, 400/50/3	3x16 Amp
HOOD DISHWASHERS	Model	Dimensions WxDxH	Electric kW	Fused
Hood dishwasher, electronic controls, 500x500mm rack. - Racks per hour: up to 50. - Cycle time: 60/120/180 seconds, plus continuous option. - Usable chamber height: 420mm. - Hot or cold soft water connection required at 1-4 bar water pressure.	CHH50 CHH50D	716x740x1529mm 1965mm hood open 635mm between tables	6.8, 400/50/3 convertable to 5.1, 230/50/1	3x16 Amp 30 Amp
Hood dishwasher, electronic controls, 500x500mm rack. - Racks per hour: up to 30. - Cycle time: 60/120 seconds. - Usable entry height: 420mm. - Hot or cold soft water connection required at 1-4 bar water pressure.	CHH30	716x740x1529mm	6.8, 400/50/3	3x16 Amp or 1x32 Amp
Hood dishwasher, electronic controls, 500x500mm rack. - Racks per hour: up to 60. - Cycle time: 60/120/180 seconds, plus continuous option. - Usable chamber height: 476mm. - Hot or cold soft water connection required at 1-4 bar water pressure.	CHH60D	716x740x1529mm	9.1/400/50/3 convertable to 6.8/230/50/1	3x16 Amp 30 Amp
Hood dishwasher, electronic controls, 500x500mm rack. - Racks per hour: up to 70. - Cycle time: 60/120/180 seconds, plus continuous option. - Usable chamber height: 476mm. - Hot or cold soft water connection required at 1-4 bar water pressure.	CHH70D	716x740x1529mm	10.8/400/50/3	3x16 Amp



GLASS AND DISHWASHER ACCESSORIES	Model		Dimensions WxDxH	
Stand for glasswasher.	CLHGSTND		440x530x350mm	
Stand for dishwasher.	CLHFSTND		580x640x450mm	
Sink unit, no drainer.	CSK650		650x700x870mm	
Sink unit, drainer with left hand void.	CSK1250LH		1250x700x870mm	
Sink unit, drainer with right hand void.	CSK1250RH		1250x700x870mm	
Single rack side table.	CST650		650x630x900mm	
Double rack side table.	CST1150		1150x630x900mm	
Double rack side table with sink, left hand.	CSTSK1150LH		1150x700x900mm	
Double rack side table with sink, right hand.	CSTSK1150RH		1150x700x900mm	
Set of mixer taps for sink units.	144604-106		-	
Mixer tap with overhead spray arm.	144604-105		-	
Water Softener, manual, cold feed 4-15°C. 750 - 1500ltr capacity.	MS12-10		200x200x500mm	
RACK CONVEYOR DISHWASHERS	Model	Dimensions WxDxH	Electric kW	Fused
Rack Conveyor dishwasher, electronic controls, 500x500mm rack. - Racks per hour: max up to 100. - Cycle time: Continuous. - Usable entry height: 400mm. - Hot or cold soft water connection required at 1-3 bar water pressure.	CCR100	1150x770x1565mm	15.5kw on hot water 24.8kw on cold water	3x25 Amp 3x40 Amp
Rack Conveyor dishwasher, electronic controls, 500x500mm rack. - Racks per hour: max up to 130. - Cycle time: Continuous. - Usable entry height: 400mm. - Hot or cold soft water connection required at 1-3 bar water pressure.	CCR130	1150x770x1565mm	17.3kw on hot water 26.8kw on cold water	3x32 Amp 3x40 Amp
Rack Conveyor dishwasher, electronic controls, 500x500mm rack. - Racks per hour: max up to 170. - Cycle time: Continuous. - Usable entry height: 400mm. - Hot or cold soft water connection required at 1-3 bar water pressure.	CCR170	1970x770x1565mm	20.9kw on hot water 29.9kw on cold water	3x32 Amp 3x50 Amp
RACK TYPE DISHWASHER - ACCESSORIES	Model			
Extra Corner Prewash	CPGL			
Straight Drier	DGL			
Corner Drier	DAGL			
Vent spigot With Fan	SEGL			
Vent spigot Without Fan	COL			
Stream Condenser	SCGL			
Heat Recovery Unit	HRGL			
Cold Water Feed Option	CVGL			
90° Powered Exit	7550			
180° Powered Exit	75660			
Machine Split For Access	SPLIT			
Integral Detergent & Rinse Aid Dosing Equipment	CDGL			

also available...

Also available from Ecomax:
The Prep Range.

For product brochures and further
information, call 0870 1688881 or visit
www.hobartindependent.com



HOBART INDEPENDENT
Southgate Way, Orton Southgate, Peterborough PE2 6GN
Tel: 0870 1688881 Email: indsales@hobartindependent.com
www.hobartindependent.com